

**ANGLO-CHINESE SCHOOL  
(JUNIOR)**



**CONTINUAL ASSESSMENT 2 (2015)  
PRIMARY 3**

**SCIENCE**

**BOOKLET A**

**Wednesday**

**26 August 2015**

**50 MINUTES**

**Name :** \_\_\_\_\_ (      )

**Class :** P3 \_\_\_\_\_

**INSTRUCTIONS TO PUPILS**

**DO NOT TURN OVER THE PAGES UNTIL YOU ARE TOLD TO DO SO**

**Follow all instructions carefully.**

**There are 12 questions in this booklet.**

**Answer ALL questions.**

**INFORMATION FOR PUPILS**

**The total marks for this booklet is 24.**

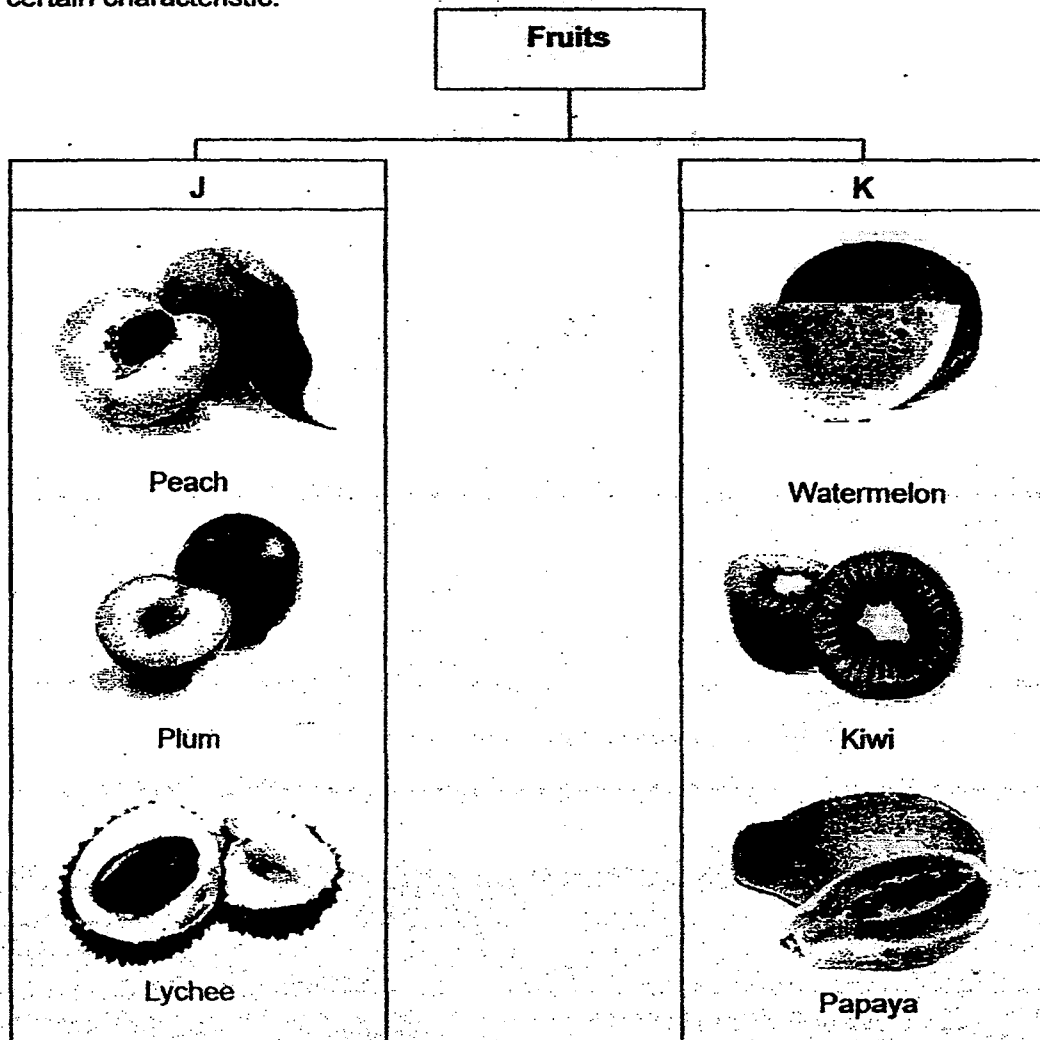
**The total time for Booklets A and B is 50 minutes.**

**This question paper consists of 9 printed pages (inclusive of cover page).**

## Section A (24 marks)

For each question from 1 to 12, four options are given. One of them is the correct answer. Make your choice (1, 2, 3 or 4). Shade your answer on the Optical Answer Sheet.

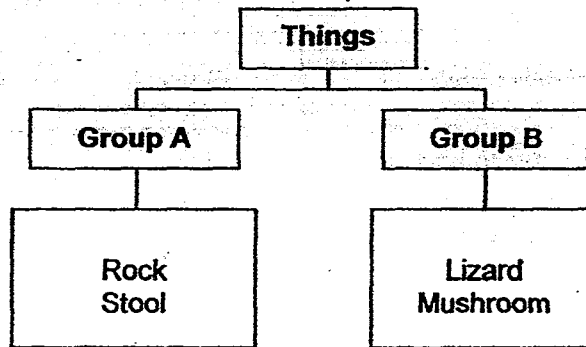
- 1 The classification chart below shows how some fruits were classified according to a certain characteristic.



Which of the following is likely to be the sub-headings for J and K?

	J	K
(1)	Edible	Not edible
(2)	Rough skin	Smooth skin
(3)	One seed	Many seeds
(4)	Oval-shaped	Round-shaped

2 Study the classification chart below.



Which of the following thing(s) can be classified under Group B?

- A Clouds
- B Bacteria
- C Rubber Duck
- D Bird's Nest Fern

- (1) B only
- (2) B and D only
- (3) A, C and D
- (4) A, B, C and D

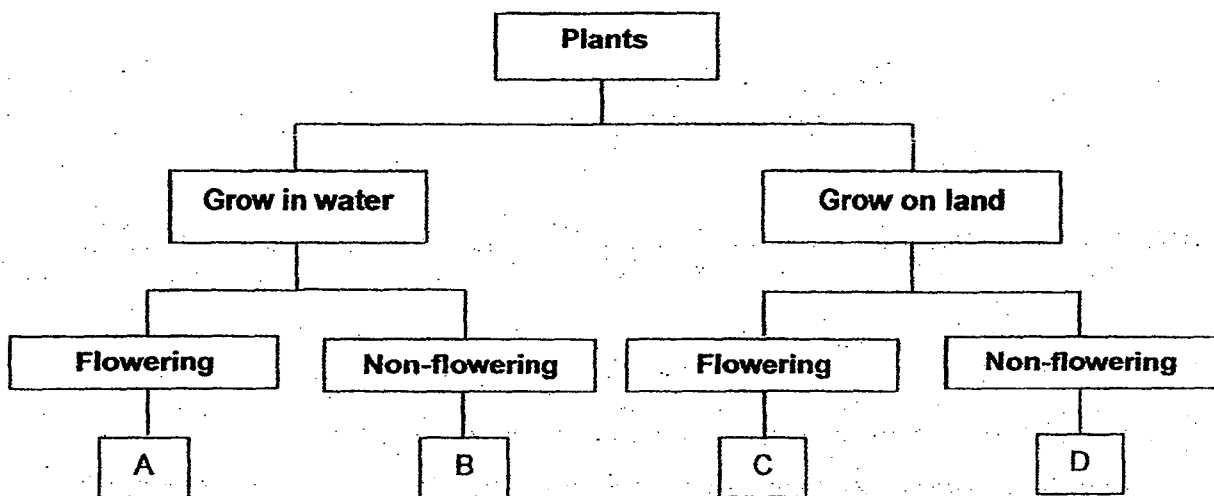
3 Which of the following statements is not true about all flowering plants?

- (1) They make their own food.
- (2) They have flowers all year round.
- (3) They will produce flowers when the conditions are right.
- (4) They can produce flowers when they become adult plants.

- 4 The following table shows some characteristics of two plants, X and Y.

Characteristics	Plant X	Plant Y
Does it grow in water?	Yes	No
Does it have flowers?	No	Yes

Use the classification chart to identify Plants X and Y.



Which of the following letters, A, B, C and D, in the flowchart best represent Plants X and Y?

	Plant X	Plant Y
(1)	B	A
(2)	D	C
(3)	A	D
(4)	B	C

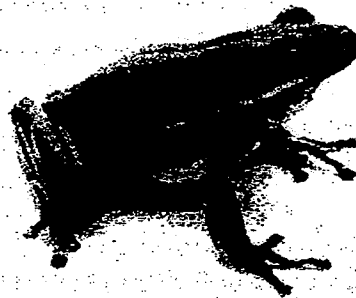
- 5 The table below states the characteristics of Animals X, Y and Z. A tick in the box indicates that the animal has the characteristic.

Characteristics	Animal X	Animal Y	Animal Z
Can swim		✓	✓
Has hair			✓
Has 6 legs	✓		

Which one of the following groups of animal do Animal X and Animal Z belong to?

	Animal X	Animal Z
(1)	Reptile	Fish
(2)	Insect	Mammal
(3)	Amphibian	Mammal
(4)	Insect	Reptile

- 6 The picture below shows a frog.

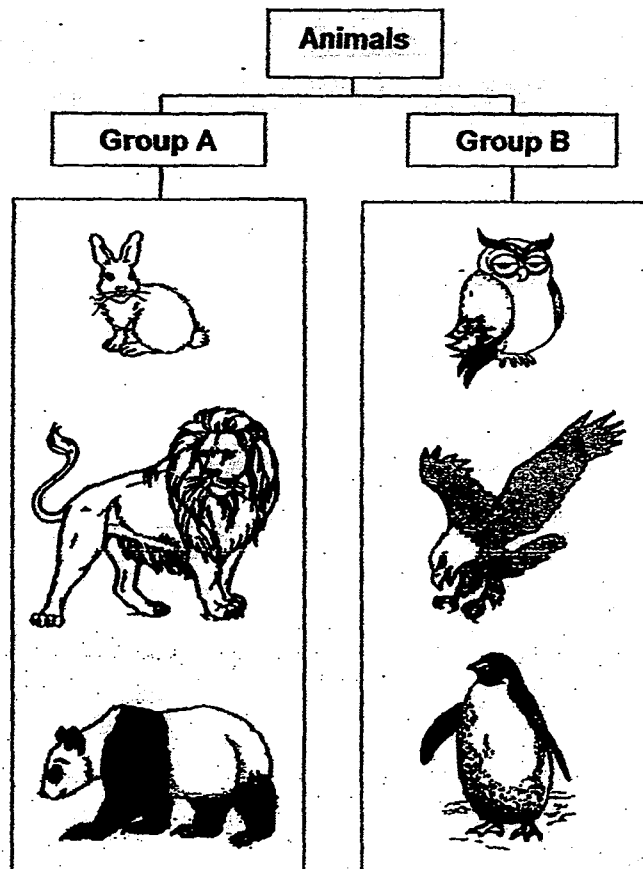


Frog

Which parts of the frog help it to breathe on land and in water?

	Breathe on land	Breathe in water
(1)	Lungs	Moist skin
(2)	Dry skin	Gills
(3)	Lungs	Gills
(4)	Dry skin	Moist skin

7 Some animals are grouped as shown below.



Which of the following is a possible grouping for the animals in the diagram above?

- (1) They are grouped according to what they eat.
- (2) They are grouped according to where they live.
- (3) They are grouped according to their outer covering.
- (4) They are grouped according to how they move about.

8 Which of the following objects can be used to see microorganisms clearly?

- (1) naked eye
- (2) binoculars
- (3) microscope
- (4) magnifying glass

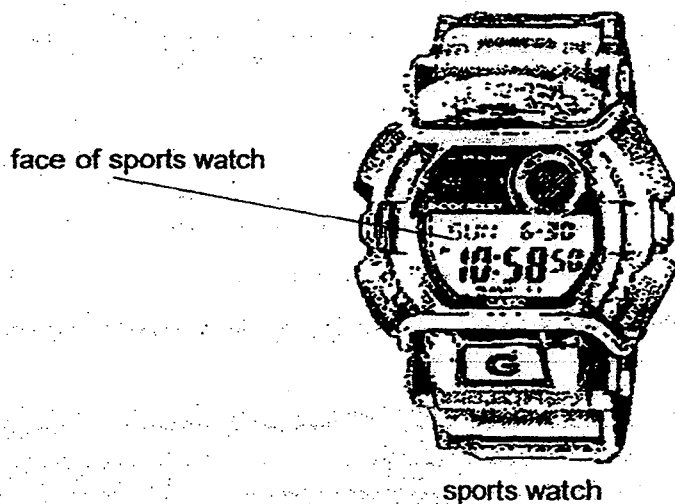
- 9 Sanjay came up with the following statements about fungi and bacteria after his Science class.

- A Some fungi can be eaten.
- B Bread mould is an example of bacteria.
- C Some fungi can be seen with the naked eye.
- D Bacteria do not respond to changes in the surroundings.

Which of the following sentence (s) made by Sanjay is/are correct?

- (1) D only
- (2) A and C only
- (3) A, B and C only
- (4) A, B, C and D

- 10 The diagram below shows a sports watch used while swimming.



The table below shows the properties of materials W, X, Y and Z. They are the different materials used to make the different parts of the sports watch. Which of the following materials has the most suitable properties to make the face of the sports watch?

	Material	Properties
(1)	W	waterproof, opaque
(2)	X	waterproof, transparent
(3)	Y	strong, flexible
(4)	Z	strong, hard

11 The picture below shows a pair of spectacles.



Ismail decided to carry out some tests on a few materials to find out which material is most suitable for making the frame of his spectacles.

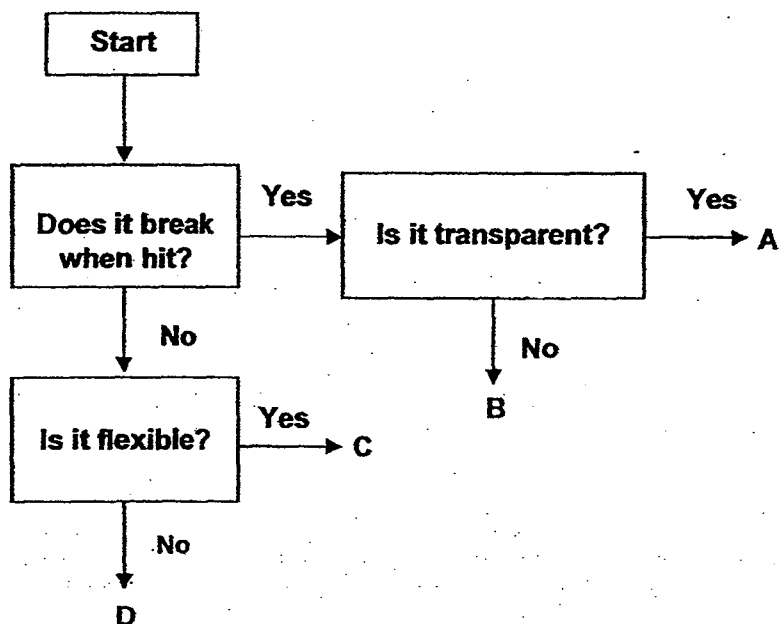
Test	Properties
E	Whether it is light
F	Whether it is able to float on water
G	Whether it is waterproof
H	Whether it allows light to pass through

Which of the following two tests will help him decide on the most suitable material?

- (1) E and F only
- (2) E and G only
- (3) G and H only
- (4) F and H only



- 12 The flow chart below shows the properties of four objects made out of different materials A, B, C and D.



Which of the following objects can A, B, C and D be?

	A	B	C	D
(1)	Plastic table	Glass beaker	Clay pot	Rubber gloves
(2)	Glass beaker	Clay pot	Rubber gloves	Plastic table
(3)	Plastic table	Glass beaker	Rubber gloves	Plastic table
(4)	Glass beaker	Clay pot	Plastic table	Rubber gloves



**ANGLO-CHINESE SCHOOL  
(JUNIOR)**



**CONTINUAL ASSESSMENT 2 (2015)  
PRIMARY 3**

**SCIENCE**

**BOOKLET B**

**Wednesday**

**26 August 2015**

**50 MINUTES**

**Name : \_\_\_\_\_ ( )**

**Class : P3 \_\_\_\_\_**

**INSTRUCTIONS TO PUPILS**

**DO NOT TURN OVER THE PAGES UNTIL YOU ARE TOLD TO DO SO**

Follow all instructions carefully.

There are 6 questions in this booklet.

Answer **ALL** questions.

**INFORMATION FOR PUPILS**

The number of marks is given in brackets [ ] at the end of each question or part question.

The total marks for this booklet is 16.

The total time for Booklets A and B is 50 minutes.

This question paper consists of 6 printed pages. (Inclusive of cover page)

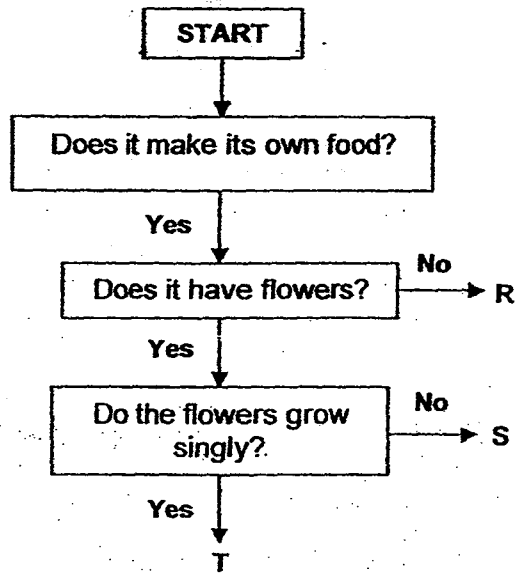
<b>PRACTICAL</b>	<b>/ 10</b>
<b>BOOKLET A</b>	<b>/ 24</b>
<b>BOOKLET B</b>	<b>/ 16</b>
<b>TOTAL</b>	<b>/ 50</b>
<b>Parent's signature/ Date:</b>	

**Booklet B (16 marks)**

For questions 13 to 18, write your answers in this booklet.

The number of marks available is shown in brackets [ ] at the end of each question or part question.

13 Study the flowchart below.



- (a) Based on the flowchart above, which of the following letters, R, S or T, best describes a rose as shown in the diagram below? [1]



Rose

- (b) State all the characteristics of S from the flowchart above. [1]

(Go on to the next page)

SCORE	
	2

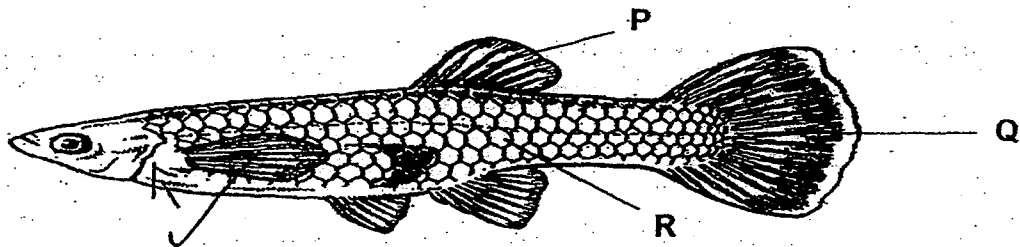
- 14 Write T for True and F for False in the boxes provided after reading the statements about living things below.

[2]

- All bacteria are harmful to us.
- All living things give birth to their young.
- Living things respond to changes around them.
- Mushrooms are plants because they reproduce from spores.

☐☐☐☐

- 15 Study the picture of a fish below carefully.



- (a) Name the body covering, R. [1]

\_\_\_\_\_

- (b) Parts P and Q help the fish in its movement. Name parts P and Q. [1]

P: \_\_\_\_\_

Q: \_\_\_\_\_

- (c) Draw an arrow (→) on the fish to show the part of the fish that helps it to breathe. [1]

(Go on to the next page)

- 16 Mrs Kwan carried out an experiment in class to find out how the amounts of water given to two identical plants affect their growth. Plant A was given 50ml of water daily while Plant B was given 100ml of water daily. She recorded her observations in the table below.

Day	Height of Plant A (cm)	Height of Plant B (cm)
1	5	5
2	6	7
3	7	10
4	8	12
5	9	14
6	10	16

- (a) Name another variable, apart from those already mentioned in the question, that has to be kept the same for the test to be fair. [1]

---

---

- (b) Based on the information in the table above, how does the amount of water given to the plants affect their growth? [1]

---

---

- (c) Apart from water, what else do plants need to survive? [1]

---

(Go on to the next page)

SCORE	<div></div>
	3

- 17 Ali and Wei Ming saw some bracket fungi on a rotting log in the school field.



- (a) Wei Ming told Ali that bracket fungi are plants. Is he correct? Explain your answer. [1]

---

---

- (b) Explain why bracket fungi are usually found on dead animals and plants like a rotting log. [1]

---

---

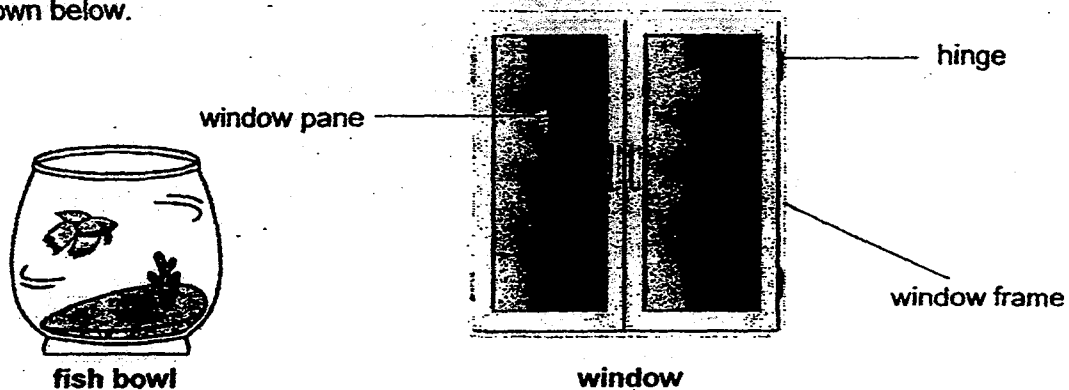
- (c) How do bracket fungi reproduce? [1]

---

(Go on to the next page)

SCORE	<div style="border: 1px solid black; width: 100px; height: 100px; position: relative;"><div style="position: absolute; top: 0; right: 0; width: 50%; height: 50%; border-left: 1px solid black; border-bottom: 1px solid black; transform: rotate(45deg);"></div></div>
	3

- 18 Kyan observed the objects in his house. He noticed a fish bowl and a window as shown below.



- (a) The fish bowl allows Kyan to see the fish while it is swimming. Which of the following materials, metal, ceramic or plastic, is most suitable for making the fish bowl? [1]

---

- (b) What is the common property between the material used to make the fish bowl and material used to make the window pane? [1]

---

- (c) Kyan noticed that the hinges fixed on the window frames shown above are all made of metal. Which is the most important property of metal that makes it suitable for making this hinge? [1]

---

---

End of Paper



**EXAM PAPER 2015****LEVEL : PRIMARY 3****SCHOOL : ANGLO CHINESE SCHOOL (JUNIOR)****SUBJECT : SCIENCE****TERM : CA2**

Q 1	Q 2	Q 3	Q 4	Q 5	Q 6	Q 7	Q 8	Q 9	Q 10
3	2	2	4	2	1	3	3	2	2
Q 11	Q 12								
2	2								

Q13a. T Q13b. It can make its own food, it has flowers and the flowers do grow singly.

Q14 F / F / T / F

Q15a. Scales Q15b. P: fin Q15b. Q: tail. Q15c. SEE PICTURE

Q16a. The amount of sunlight.

Q16b. The more water given to the plant, the taller it will be.

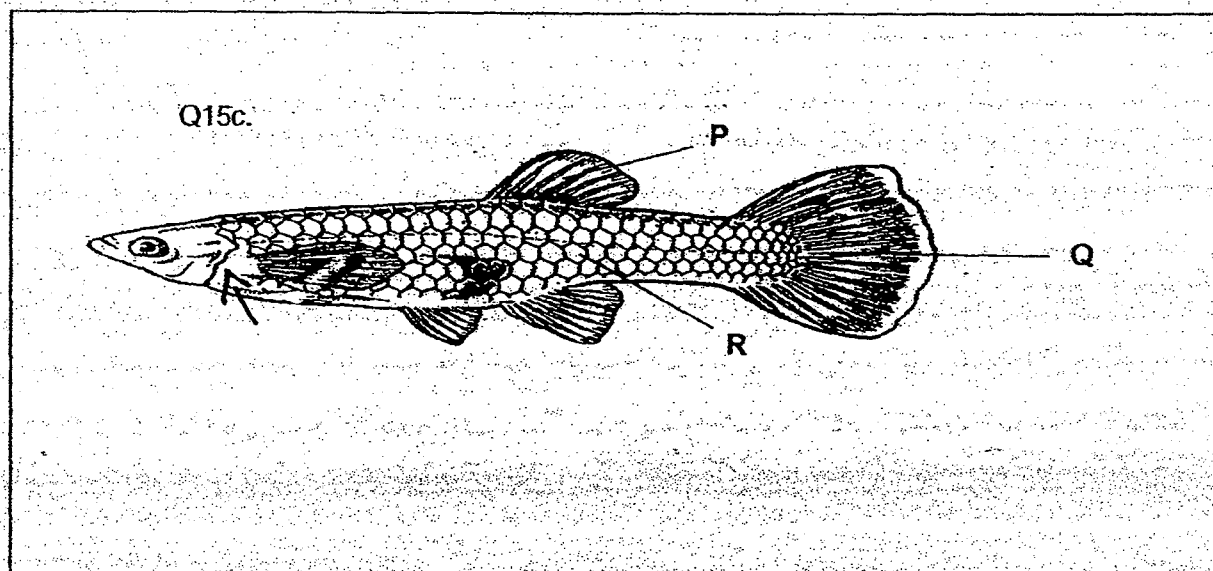
Q16c. Plants need nutrients, air and sunlight to survive.

Q17a. No. The bracket fungi has no roots, stems, leaves and does not need sunlight to grow.

Q17b. Bracket fungi feed on dead or decay things.

Q17c. Bracket fungi reproduce by spores.

Q18a. Plastic Q18b. They must be transparent. Q18c. It is strong.



THE END

